



higher education
& training
Department
Higher Education and Training
REPUBLIC OF SOUTH AFRICA



BUFFALO CITY
TVET COLLEGE

REQUEST FOR QUOTATIONS – T-SHIRTS, TRACKSUITS AND CAPS FOR SAFETY IN SOCIETY L2-L4

Kindly see the attached request for quote (RFQ). Quotations should be forwarded to quotations@bccollege.co.za.

TENDERERS MUST NOTE THAT WHEREVER THIS DOCUMENT REFERS TO ANY PARTICULAR TRADE MARK, NAME, PATENT, DESIGN, TYPE, SPECIFIC ORIGIN OR PRODUCER, SUCH REFERENCE SHALL BE DEEMED TO BE ACCOMPANIED BY THE WORDS 'OR EQUIVALENT.

Kindly submit the following **REQUIRED** documents when responding to the RFQ

- Signed quotation (quotations not signed will be eliminated)
- Latest declaration forms (SBD 4, 8 and 9), see attached on college website
- Certified BBBEE certificate (0 points will be awarded for BBBEE certificates that are not certified)
- Tax Clearance Certificate
- CSD full report
- Company Registration
- Bank Confirmation Letter (not older than 3 months)
- Quotations must be detailed as per specification
- **Quotations must be submitted in the PDF format ONLY**
- All quotations submitted via email addresses other than the one listed above will not be considered.

Closing Date 17 January 2024 at 11h00 am. No late or hand delivered documents will be accepted. ONLY EMAILED DOCUMENTS WILL BE ACCEPTED

043 704 9238 / 043 704 9241



Date: 09 January 2024

To whom it may concern

Quotation Request for Safety in Society L2-L4 PPE's (T-shirts, Tracksuits & Caps)

Please provide a quotation for the listed items specified below: Amanda Dayizana

| Item # | Description | Size | Quantity |
|--------|---|--------------------------|------------------------------|
| 1. | MENS & LADIES LUNAR GOLFER - RED Knitted rib collar, set sleeves, two button placket, only men's supplied with a loose pocket, knitted rib cuffs, dropped shoulder, contrast back neck binding, 160g 100% polyester pique knit with management finish e-Dri College logo on left chest (Royal blue & White) Department of education logo on the right RHS DHET in (White) SAFETY IN SOCIETY on the back in (white) | S M L XL XXL | 80 80 80 25 25 |
| 2. | BRT- Econo Tracksuit (Top& Bottom) (Red, White, Black) Long sleeves top Contrast on detailed shoulders Side Pockets Elasticated drawcord in hem Tapered legs Elasticated waistband with drawcord 200g 100% polyester College logo on left chest (Royal Blue & White) Department of education logo on the right RHS DHET in (white) | S M L XL XXL | 100 100 50 20 20 |

SPECIFICATION FOR TRACKSUITS, T-SHIRTS & CAPS FOR SAFETY IN SOCIETY STUDENTS DATED 09 JANUARY 2023

| | | | |
|----|---|----------------|-------------|
| 3 | BRT- Econo Tracksuit (Top& Bottom) (Navy, White) Long sleeves top Contrast on detailed shoulders Side Pockets Elasticated drawcord in hem Tapered legs Elasticated waistband with drawcord 200g 100% polyester College logo on left chest (White & Red) Department of education logo on the right RHS DHET in (white) | L XL XXL | 8 1 2 |
| 4. | 6 PANEL CAP BRUSHED COTTON CAP(RED) Structured 6 panel Pre-curved peak Velcro closure Low profile Heavy Brushed Cotton fabric Oeko-Tex 110mm x 55mm College logo on the front (Royal Blue & White) Department of education logo on the right RHS DHET in(white) | | 290 |

- **Please quote according to the specification**
- **A sample will be requested from the shortlisted and qualifying service providers**
- **Confirmation of the art-work will be requested prior printing**
- **Delivery date: within 14 days of issuing of the purchase order**


 W. Nombembe
 Procurement Dept

09-01-24
 Date


 S. Xokwe
 Head of Admin

09.01.2024
 Date

SPECIFICATION FOR TRACKSUITS, T-SHIRTS & CAPS FOR SAFETY IN SOCIETY STUDENTS DATED 09 JANUARY 2023



S. Jane
Campus Manager

09.01.2024
Date



P. Mawila
DP: Academic

09/01/2024
Date



Z. Jikwana
Acting Assist Director

10/01/2024
Date

SPECIFICATION FOR TRACKSUITS, T-SHIRTS & CAPS FOR SAFETY IN SOCIETY STUDENTS DATED 09 JANUARY 2023

Mens & Ladies Golfer

LUN/L-LUN

Features

- Knitted rib collar
- Set sleeves
- Two button placket
- Only mens supplied with a loose pocket
- Knitted Rib cuffs
- Dropped shoulder
- Contrast back neck binding
- 160g 100% Polyester piqué knit with moisture management finish; e-Dri

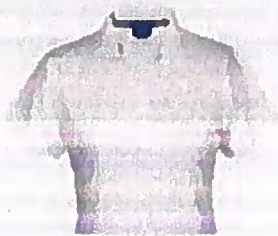
Available in: Ladies

| SIZE | XS | S | M | L | XL | 2XL | 3XL | 4XL | 5XL |
|----------------|----|----|------|----|------|-----|------|-----|------|
| 1/2 CHEST (cm) | 46 | 49 | 51.5 | 54 | 56.5 | 59 | 61.5 | 64 | 66.5 |

Printing Options



black



white



royal



red



sapphire blue



navy



Available in: Mens

| SIZE | S | M | L | XL | 2XL | 3XL | 4XL | 5XL |
|----------------|----|------|----|------|-----|------|-----|------|
| 1/2 CHEST (cm) | 53 | 56.5 | 60 | 63.5 | 67 | 70.5 | 74 | 77.5 |

Matching

Tracksuit

BAT315

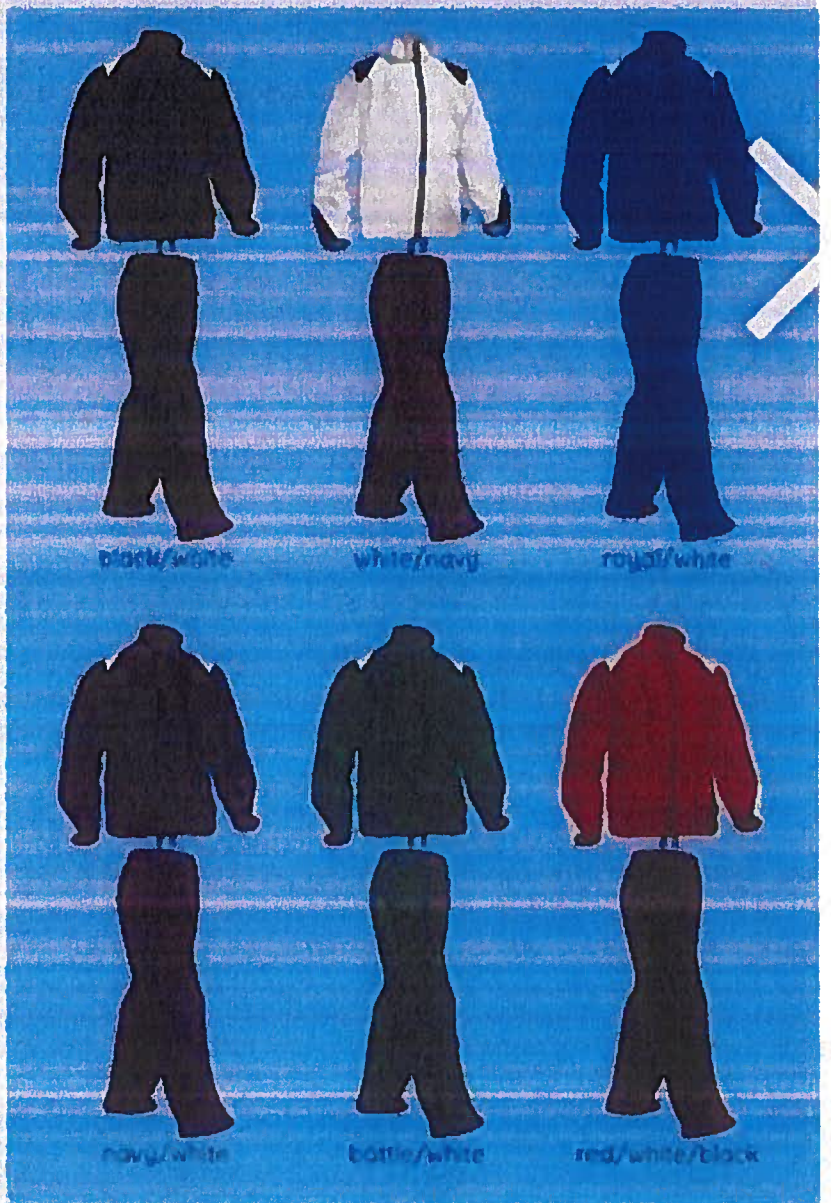
Features

- Long sleeve top
- Contrast detail on shoulders
- Side pockets
- Elasticated drawcord in hem
- Tapered legs
- Elasticated waistband with drawcord
- 200g 100% Polyester

Available In



Branding Options



AVAILABLE IN KIDS SIZES



3 Panel Brushed Cotton Cap

HW003

Features

- Structured 6 Panel
- Pre-curved peak
- Velcro closure
- Low profile
- Heavy Brushed Cotton Fabric
- Oeko-Tex

Available in

(STD)

Max Branding Size

- 110mm x 55mm

Branding Options



back view