



higher education
& training
Department:
Higher Education and Training
REPUBLIC OF SOUTH AFRICA



**BUFFALO CITY
TVET COLLEGE**

**REQUEST FOR QUOTATIONS – T-SHIRTS AND OUTDOOR HATS FOR
ENGINEERING L2-L4 STUDENTS**

Kindly see the attached request for quote (RFQ). Quotations should be forwarded to quotations@bccollege.co.za.

TENDERERS MUST NOTE THAT WHEREVER THIS DOCUMENT REFERS TO ANY PARTICULAR TRADE MARK, NAME, PATENT, DESIGN, TYPE, SPECIFIC ORIGIN OR PRODUCER, SUCH REFERENCE SHALL BE DEEMED TO BE ACCOMPANIED BY THE WORDS 'OR EQUIVALENT'.

Kindly submit the following **REQUIRED** documents when responding to the RFQ

1. Signed quotation (quotations not signed will be eliminated)
2. Latest declaration forms (SBD 4, 8 and 9), see attached on college website
3. Certified BBBEE certificate (0 points will be awarded for BBBEE certificates that are not certified)
4. Tax Clearance Certificate
5. CSD full report
6. Company Registration
7. Bank Confirmation Letter (not older than 3 months)
8. Quotations must be detailed as per specification
9. **Quotations must be submitted in the PDF format ONLY**
10. All quotations submitted via email addresses other than the one listed above will not be considered.

Closing Date 12 NOVEMBER 2024 at 11h00 am. No late or hand delivered documents will be accepted. ONLY EMAILED DOCUMENTS WILL BE ACCEPTED

043 704 9238 / 043 704 9241



Date: 01 November 2024

To whom it may concern

Quotation Request for T-shirts & Outdoor Hats - EngineeringL2- L4 students.

Please provide a quotation for the listed items specified below:

Item #	Description	Size	Quantity
1.	LADIES LUNAR GOLFER - RED Knitted rib collar, set sleeves, two button placket, only men's supplied with a loose pocket, knitted rib cuffs, dropped shoulder, contrast back neck binding, 160g 100% polyester pique knit with management finish e-Dri College logo on left chest (Royal Blue& White) Department of Education logo on the right RHS DHET in (white) BUILDING & CIVIL ENGINEERING on the back in (white) MEN'S LUNAR GOLFER - RED Knitted rib collar, set sleeves, two button placket, only men's supplied with a loose pocket, knitted rib cuffs, dropped shoulder, contrast back neck binding, 160g 100% polyester pique knit with management finish e-Dri College logo on left chest (Royal Blue& White) Department of Education logo on the right RHS DHET in (white) BUILDING & CIVIL ENGINEERING on the back in (white)	S M L XL XXL XXXL	40 40 30 20 10 10
2.	LADIES LUNAR GOLFER – ROYAL BLUE Knitted rib collar, set sleeves, two button placket, only men's supplied with a loose pocket, knitted rib cuffs, dropped shoulder, contrast back	S M L XL XXL	40 40 30 20 10

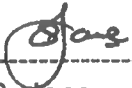
SPECIFICATION FOR T-SHIRTS AND OUT DOOR HATS L2 – L4 STUDENTS DATED 01 NOVEMBER 2024



S. Xokwe
Snr Admin Officer

01. 11. 2024

Date



S. Jane
Campus Manager

01. 11. 2024

Date



B. Timothy
SCM: Manager

04/11/2024

Date

SPECIFICATION FOR T-SHIRTS AND OUT DOOR HATS L2 – L4 STUDENTS DATED 01 NOVEMBER 2024

Mens & Ladies Lunar Golfer

LUN/L-LUN

Features

- Knitted rib collar
- Set sleeves
- Two button placket
- Only mens supplied with a loose pocket
- Knitted Rib cuffs
- Dropped shoulder
- Contrast back neck binding
- 160g 100% Polyester plqué knjt with moisture management finish e-Dri

Available in. Ladies

SIZE	XS	S	M	L	XL	2XL	3XL	4XL	5XL
1/2 CHEST (cm)	44	47	50	54	58	62	66	70	74

Printing Options



black



white



royal



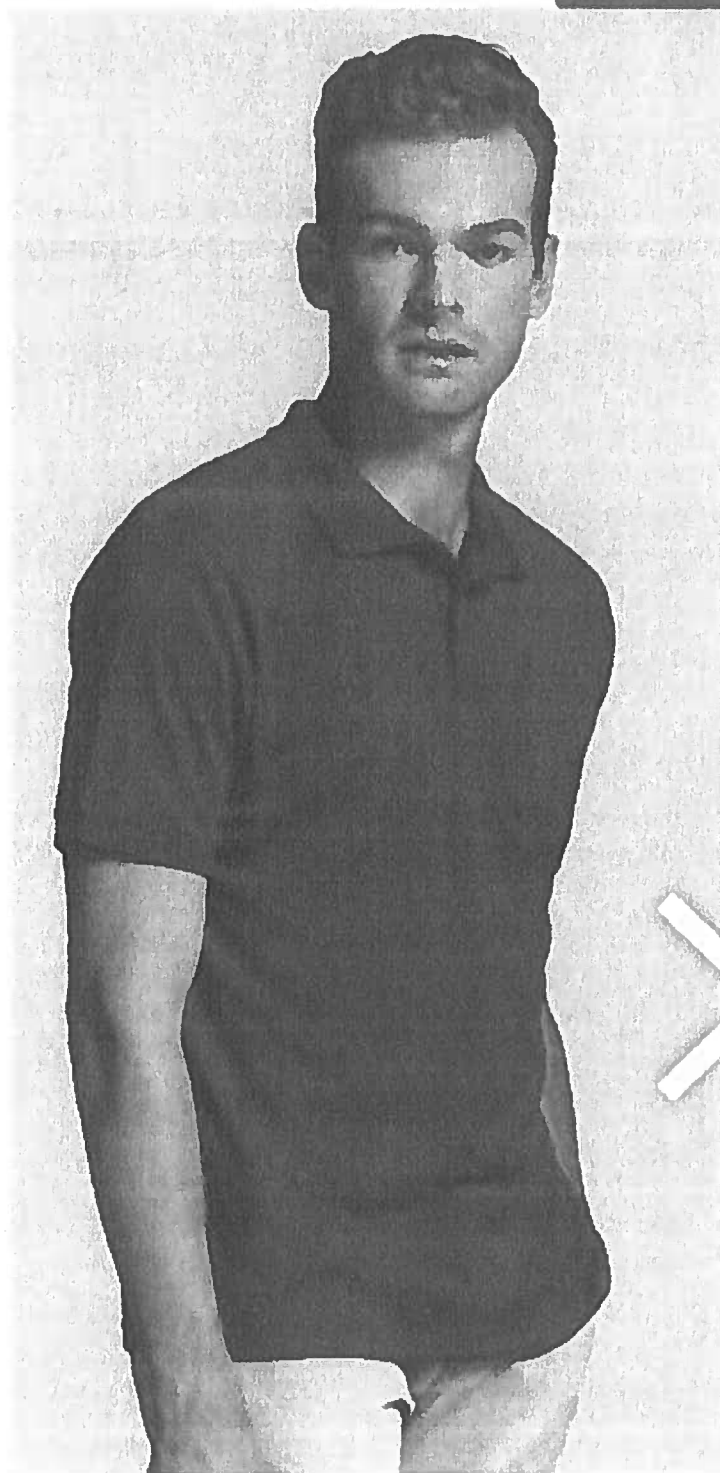
red



sapphire blue



navy



Available in Mens

SIZE	S	M	L	XL	2XL	3XL	4XL	5XL
1/2 CHEST (cm)	51	54.5	60	63.5	67	70.5	74	77.5

Matching

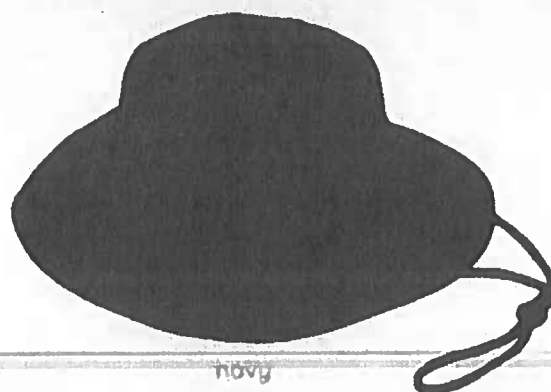


Outdoor Hat

HW024

Features

- 4-Needle stitched sweatband
- Drawcord with toggle stopper
- Poly Cotton twill fabric
- Onko-Tex



Available in

XXS/XSM S/M L/XL

Max Branding Size

- 100mm x 45mm

Branding Options

